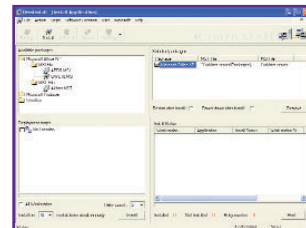


AkhterSuite Software

including

User friendly **Network Management**
Fast **WebMail** and **Broadband** Internet
Surf Control options and more...



Introducing Akhter



Akhter Computers Ltd is a British company, established in 1979, that has built its reputation on providing Computer and Communication networks, primarily within the Education and Ministry of Defence sectors. Not only does Akhter provide the hardware and networking infrastructure, it also offers management software to make day to day network administration much simpler for its customers.

AKHTERSUITE

AkhterSuite is a range of software developed by Akhter Computers. The range includes tools for network management, software installation, network monitoring as well as email and web browsing.

Akhter's aim in developing AkhterSuite has always been to make life more efficient and productive.

In many organisations, key technical staff time is taken up with the everyday running of the network. Akhter's powerful management tools can help take care of the day to day, so senior staff can be more pro-active in developing the IT resource.

All of the software that Akhter writes is developed in line with Microsoft's "Zero Administration Toolkit". This allows Akhter's management tools to take full advantage of the powerful features embedded in Microsoft's operating systems. It also means that Akhter's solutions are always "open" and fully compatible with other Microsoft compatible software. No proprietary routes are taken.

REFRESH NETWORK UPGRADE

If you currently have an out of date or disparate network that requires upgrading, ask about Akhter's ReFresh programme. ReFresh is a fast and efficient way to bring your network up to date with the latest Microsoft standards, in a fraction of the time normally expected. And, for minimal disruption, Akhter often carries out ReRefresh during holiday periods for ZERO downtime during normal working hours.

MICROSOFT PARTNERSHIP

Akhter has enjoyed a close working partnership with Microsoft for around 20 years.

Akhter has Platinum OEM status, supplying Microsoft products on the Servers and Workstations that it builds, and is a Microsoft Certified Partner, providing additional services of its own (like ReRefresh) that enhance the benefits of Microsoft software.



Akhter Software Suite

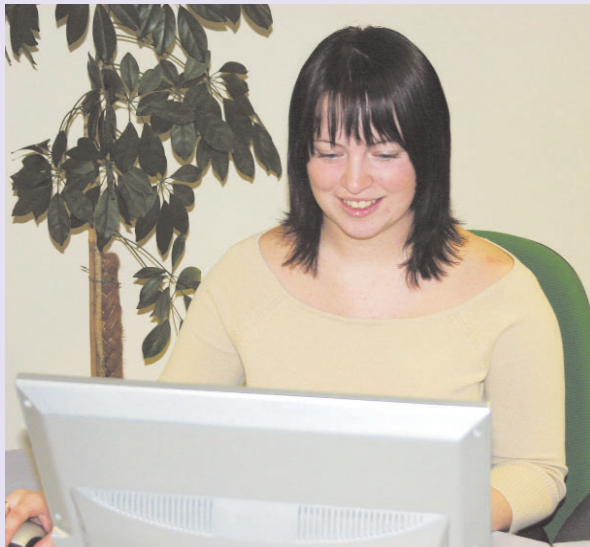
Introducing Akhter	2
Product Summary	3
Network Management Tools - InterJigsaw	4
Software Installation Tools - RemInstall	6
Monitor Network Activity - UserAudit	9
Approved Internet - InterGenie	10
Managed Internet Access - GenieGuard	11
Professional Internet Solution	12
Office and remote email - Akhter WebMail	13
Professional ISP - Akhter Internet	14
Broadband choice from Akhter ADSL	15

Product Summary

- **Easy to use network management tools**
- **Fast email and broadband internet**

Easy to use suite of network management tools

A suite of network tools that simplifies and empowers non technical staff to handle the administration job. The tools are so easy to use that non-technical staff can take on the network admin workload that would have formally need to have been handled by IT specialists, speeding up implementation and leaving the IT department to engage in their technical and development work.



Network administration can also be delegated to non technical staff.

InterJigsaw

Popular with educational institutions the Akhter InterJigsaw network management tool empowers the people with immediate access to and responsibility for a group of students. This allows teachers and admin staff to take day-to-day control of the basic network administration tasks, such as adding a new user. InterJigsaw/RemInstall can assist colleges in managing their software licences, with potential savings subject to the software vender's terms and conditions.

RemInstall

With RemInstall a user can install software across an entire network of computers remotely from one central location. It could be from the server on the network or, via a remote desktop or even from a different location anywhere on the same network. The software will install the applications required, subject to license, in a fraction of the time it would take to visit each individual workstation with CDs.

UserAudit

Full summary reporting of network applications support resource plans and the ability to monitor user/workstation activity deters abuse of the system.

Akhter ISP

The Internet system is ideal for business or public sector users. Optional inbuilt administration controls enable users to be blocked from accessing particular sites or categories. Choose from only accessing approved sites (white lists) to blocking access to particular categories of web-pages (black lists) or a system that monitors user access. The facilities protect minors from exposure to unsuitable sites or staff from distracting non-work related information. Webmail is available integrated with Akhter broadband and Akhter ISP, which has a wide choice of Internet access speeds.

Network Management Tools

- InterJigsaw

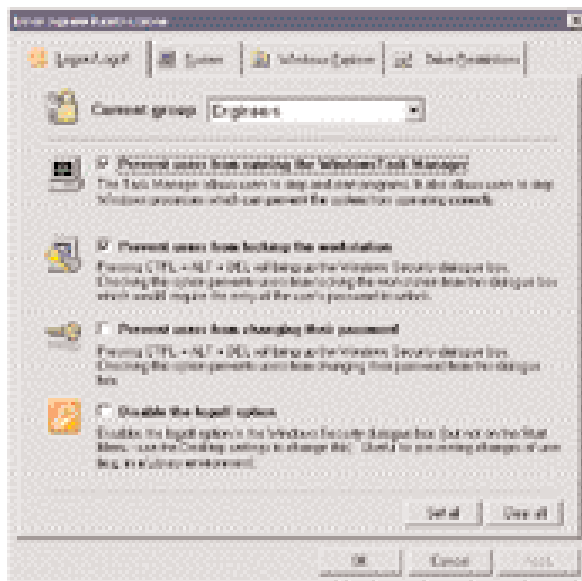
The problem

Network management can be complex and time-consuming, particularly for organisations with large numbers of workstations or users. This is the situation with schools and colleges where the high turnaround rate of students requires on-going creation, maintenance and removal of user accounts on the network domain controllers. These repetitive tasks can place heavy demands on valuable IT staff time diverting them from vital technical network issues.

The solution - InterJigsaw

To assist in the administration of complex networks Akhter have developed InterJigsaw which is a powerful yet simple to use network management solution. Designed with a user-friendly interface both technicians and less skilled staff benefit from efficient procedures. Implementing InterJigsaw enables many administration tasks to be delegated to less technical staff.

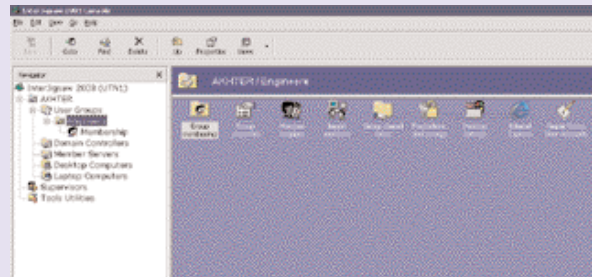
The current version of InterJigsaw has been designed for use on Active Directory networks using Windows 2000 or 2003 server and Windows XP clients.



InterJigsaw Restrictions

Why is Akhter InterJigsaw XP special?

During the development of InterJigsaw Akhter engineers researched the requirements of System Administrators and developed a product that increased efficiency in carrying out day-to-day tasks. Within major organisations skilled technicians are often frustrated at the amount of time consumed by repetitive administration, when using the native Windows environment. Implementing InterJigsaw cuts the time spent on such tasks, enabling IT people to concentrate on issues that demand their specific skills.



InterJigsaw Console

Unlike many other network administration tools, InterJigsaw leverages existing Microsoft technologies to get the job done. Unlike many other third party management tools, InterJigsaw fully integrates with the existing Windows Disk Quota system to provide an enhanced and easier method to control disk space usage.

As InterJigsaw integrates with the Windows operating system it allows skilled administrators to adjust the network settings using the native Windows environment without breaking the functionality of InterJigsaw. With competitive tools administrators are often barred from changing system settings and by doing so affect the level of support provided by the vendor.

Akhter continue to review and develop its products in response to customer needs and technology changes. Updates are provided to existing customers as part of the support agreement.

InterJigsaw Management functions

InterJigsaw has a number of primary network management functions:

User Account Management

InterJigsaw's template system ensures that account management is easy. Accounts are rapidly created, maintained, moved and deleted. Using a simple drag and drop operation InterJigsaw can move user accounts and the associated data between different file servers.

Desktop and start menu management

InterJigsaw creates a desktop and start menu for each group of users. This desktop/start menu is stored on a central server so that the user will obtain the correct group desktop/start menu wherever they logon to the network. A system administrator can select which application shortcuts are available on the desktop and start menu for each user group ensuring that users within the group can only run permitted applications. Where required this feature can be switched off for a group allowing the user to access the local workstation desktop and start menu.

Policy management

Windows XP uses policies to control many aspects of the workstation configuration.

This allows an administrator to centrally manage a large number of workstations and users without having to visit each individual workstation. Although the policy system is very powerful it is also complex and requires a high level of skill to implement correctly. InterJigsaw manages many common XP policies through a simple to use front end. When a new user group is created a policy is automatically created with certain operating system features locked down by default.

The InterJigsaw console can modify these policy settings through its user-friendly interface.

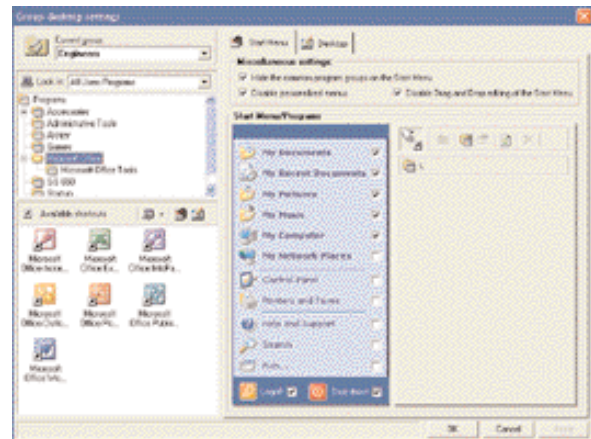
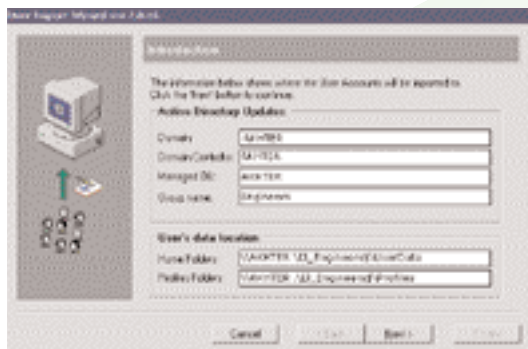
Secure data management

When creating user accounts InterJigsaw creates home directories on a specified domain controller or member server. The user's 'my documents' folder is redirected to this server based folder so that data is stored on the server rather than on individual workstations. User's data is backed up regularly and available from any workstation. InterJigsaw automatically sets permissions on home folders to prevent unauthorised access to user data. Storing data on a central file server rather than on a workstation makes it much easier to rebuild or replace the workstation in the event of a system corruption or hardware problem.

InterJigsaw also creates a shared folder that allows group users to exchange and share common files.

Creating groups is simple

Creating a User Group can be time consuming using the native Windows environment. InterJigsaw makes this process as simple as entering a Group name and pressing the return key. InterJigsaw creates everything necessary including a default policy for the Group, data areas for the user home folders and logon scripts. User groups can be created on any domain controller or member server in the domain and InterJigsaw provides a single consistent view of the data.



Group Desktop Settings

Creating user accounts is simple too

Creating a new user account takes just seconds to do. Just tell InterJigsaw, which group the user belongs to and it will automatically create the necessary system objects, home folder, profile folder and set the appropriate access permissions. The account is immediately ready for the user to log-on.

Bulk importer system

The InterJigsaw importer system allows a large number of user accounts to be imported in seconds from an existing CSV (Comma Separated Values) data file. This CSV files can often be created from accounting systems, Microsoft Excel or even Notepad. The importer performs a wide range of checks to ensure that the CSV file is valid before the accounts are created. A logon can be generated from any characters in the user's full name. You can also include random numbers or letters in these calculated fields to generate random passwords.

Central printer control

In a large network where users log on to any workstation (e.g. in a school or college) managing printers can become a nightmare. InterJigsaw can automatically connect users to the correct shared network printers when they log on to a workstation. The printer connections are based on the defined location of the workstation. For example, within InterJigsaw you specify that a particular workstation is located in Room 72, then configure one or more printers also to be in this location. It is not necessary for the user to run the printer connection wizard or for an administrator to install the printer locally on the workstation.

Disk quotas

Windows Server 2000 and 2003 have a Disk Quota System built into the NTFS filing system. The problem with using this via Windows is that the Disk Quota entries have to be managed separately from the user accounts and also managed on each specific server. This makes it very difficult to perform such tasks as updating the quota settings for all users in a specific group. InterJigsaw fully integrates with the Windows Disk Quota System to provide a much easier to use system with additional functionality. For example disk quotas are automatically updated when a user is moved between groups and disk quota entries are automatically deleted when the user account is deleted.

Exchange integration

InterJigsaw now has the ability to create Exchange mailboxes when user accounts are created.

Teacher console

InterJigsaw can operate in a reduced functionality mode called the teacher console. This provides teachers with a method for changing user passwords, accessing the group shared area or home folders, etc.

File publisher

Using InterJigsaw you can deploy one or more files directly into the home folders of selected Users. This is very useful for distributing project files, homework or other resources.

Control safe surfing module

You can use InterJigsaw to control the optional Akhter InterGenie module that allows safe surfing, providing access to over 10,000 pre-approved websites. The number of sites is growing all the time. Details of InterGenie are featured on page 10.

InterJigsaw - major features at a glance

User account administration

- Automatic creation and maintenance of active directory structure
- Complete user account lifecycle management
- Rapid creation and deletion of user groups and user accounts
- Move user accounts/data across servers
- Bulk user account importer
- Quick search facility
- Simple integrated view of user accounts and user data
- Automatic creation of logon scripts
- Automatic creation of exchange mail boxes
- List home folder/profile usage

Ruggedised user environment

- Control desktops and start menus by group
- Drag and drop desktop/start menu editor
- Simplified management of XP policies
- Automatic XP policy creation
- Hide/restrict access to specific drive letters
- My documents redirected to server based home folder
- Control Akhter InterGenie Internet access levels
- Control access to Internet Explorer settings
- Workstation locking

Printer control

- Defined locations list
- Automatic printer mapping
- Handles roaming laptops

Miscellaneous

- Profile deletion feature
- Automatic workstation ping utility
- Scan/repair diagnostics
- Integration with virtual CD
- Publish files to users home folder
- Integration with Windows Disk Quota system

Initial Licence		
Corporate	Education	
Per Server	£5,000	£1,000
Per User	£25	£5

All prices exclude VAT

Annual Renewal		
Corporate	Education	
Per Server	£2,500	£750
Per User	£25	£5

All prices exclude VAT

Network Installation Tools

- RemInstall

The problem

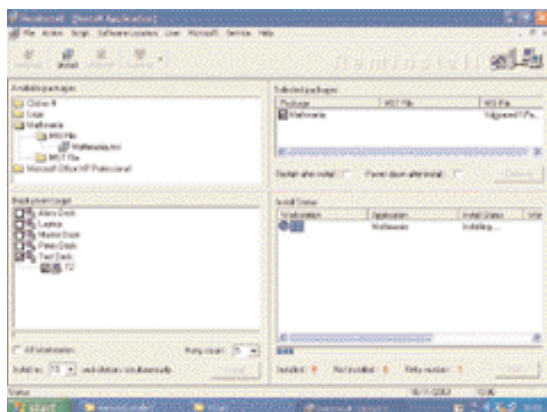
As the number of program applications used across major networks increases, keeping up-to-date can be a major headache for the IT team, as even installing a single application can be time consuming. When numerous workstations are involved and multiple applications are required the tasks can consume significant staff time.

The solution - RemInstall

RemInstall provides a solution to the problem by automating the application deployment process. Although Microsoft provides an application deployment mechanism using the active directory this still has many drawbacks. For instance, using active directory deployment, it is very difficult to install an application on a selected range of workstations. RemInstall can deploy applications from one to all workstations in the network based on their physical location. The deployment can be carried out while the workstation is still in use or can be scheduled at a time when the network is less busy. The more workstations in a network the greater the time saving efficiency RemInstall delivers.

Remote software installation

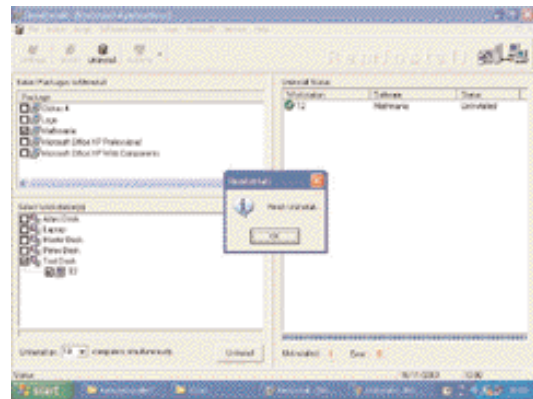
Akhter RemInstall enables IT staff to install applications over an entire network of computers remotely from one central location. It can be from the server on the network or, via a Remote Desktop session. Applications can be deployed (subject to the vendor's license) in a fraction of the time it would take to visit each individual Workstation with CDs.



Install Screen

Simple to use

Akhter RemInstall has been designed with the non-technical User in mind. The drag and drop simplicity of RemInstall means that even the least experienced User will be able to take advantage of its powerful features. The current version of RemInstall has been designed for use with Windows 2000 and 2003 servers and Windows 98, 2000 and XP clients.



Uninstall

Application auditing

RemInstall can remotely audit the applications deployed throughout a network by either application or workstation. This provides an overall picture of application usage, which, in turn assists decisions as to where programs are needed and in removing applications that are rarely used. The cost of applications is a major financial factor in running a large network and therefore RemInstall can provide a return on investment very quickly.

Patch deployment

In addition to deploying entire applications, RemInstall can be used to distribute patches and fixes to keep your network fully up-to-date.

Scheduling

RemInstall has a built in scheduler which allows you to specify the exact date and time to deploy the application(s) or to execute a RemInstall script. Applications can therefore be deployed at times when the network is quiet.

Scripting

RemInstall includes a built in scripting system. A RemInstall script can be used to install one or more applications, uninstall one or more applications, re-start the system, shut down the system, wake up the system and perform other functions in any sequence. A script can be scheduled to execute at a specific time. A typical use for a RemInstall script would be to shut down selected Workstations at a specific time or to wake up selected workstations at a specific time (workstations require Wake-On-LAN support for this feature).

Uninstall

The process to uninstall applications is just as straightforward as deploying them. Simply select the packages you wish to uninstall from the package list and select the target workstations. Uninstalls may also be scheduled or included within a RemInstall script.

Self-healing software

The days of having to install a complete application just because a single file was deleted are now over. Applications installed using Akhter RemInstall incorporate a feature that will detect when application files are missing and will reinstall them automatically. If program files are accidentally deleted, a seamless automatic installation procedure means that you won't even know it was lost.

Reallocate applications

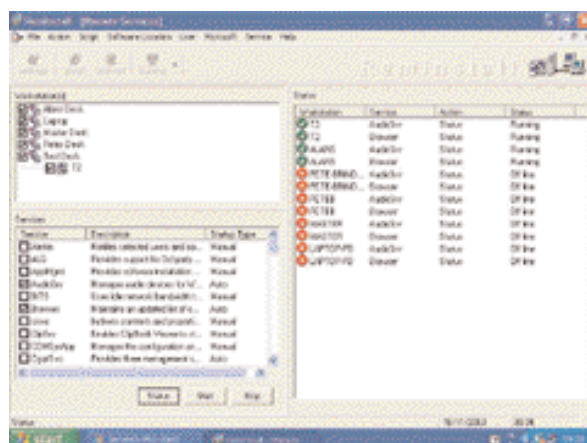
RemInstall allows you to maximise your application licenses. Using RemInstall you can easily uninstall an expensive application and reinstall it where it is required.

Standard application sets

Adding a new workstation to a network will often require the installation of a number of standard applications. RemInstall can assist in this situation by maintaining a database of applications which need to be deployed to a specified location. Simply specify the location of the new workstation and RemInstall will automatically ensure that it has the required applications, if necessary and removing those applications not in defined in the application set.

Conflict checking

RemInstall now includes a system for identifying potential conflicts in application DLLs. Such conflicts can cause applications to break or function incorrectly. The RemInstall conflict checker scans applications which are to be deployed and will report DLL or version conflicts allowing the administrator to perform additional pre-deployment testing.



Service Status

MSI Package		
	Corporate	Education
Creation Per Package	£750	£150
Customisation Per Day	£850	£850

All prices exclude VAT

Lower cost hardware

As RemInstall removes the need to install applications at the individual workstation it is possible to use workstations without floppy or CD ROM drives.

Advantages in an educational environment would include:

- Removing the risk of computer virus infection transfer via diskettes.
- Reducing the cost of hardware and insurance cover.
- Fewer components to wear out or to be broken.

RemInstall - major features at a glance

- Central repository of application packages
- Location system - integrates with InterJigsaw
- Simple drag and drop user interface
- Deploy multiple applications in a single RemInstall session
- Deploy applications to selected workstations or by location
- Set the max concurrent installs to limit network bandwidth usage
- Automatic retry mechanism
- Audit deployed applications by application or workstation
- Uninstall one or more applications in a single session
- Define standard application sets for each location
- Built in scheduler
- Built in scripting system
- DLL/Version conflict checking
- Remote workstation shutdown/wake up

Initial Licence		
	Corporate	Education
Per Server	£5,000	£1,000
Per User	£25	£5

All prices exclude VAT

Annual Renewal		
	Corporate	Education
Per Server	£2,500	£750
Per User	£25	£5

All prices exclude VAT

Monitoring Network User Activity

- UserAudit

The problem

Major organisations frequently need to monitor the usage of the network in order to quantify and plan for the effective deployment of network resources/applications and to be aware of how these costly resources are being utilised by the individual User. Obtaining this information in a useable format can be very difficult. Although Windows does record some basic User activity in the Windows event log this is rarely in the format required and requires considerable effort to filter and report the data. The Windows event log data is not central and data is stored on individual workstations.

The solution - UserAudit

UserAudit provides an efficient method for recording and reporting various types of user activity including logon location and time, logoff time and application usage. A system service installed on the client workstation constantly monitors the user activity and reports this information (in real-time) to a central database server. The central database can store a huge number of transactions and can be filtered to produce detailed reports on any aspect of user activity. UserAudit can also be configured to prevent undesirable applications from being executed on a workstation depending on the Workstation used or the current user's logon name.

Network activity recording

UserAudit is a tool that helps network administrators in several ways. It shows, via detailed reports and easy to read charts, exactly what applications are being used on the network by whom, where and when. These reports include usage by:

- Application
- Department
- Workstation
- User
- Course (for schools and colleges)

Initial Licence	
Corporate	Education
£5,000	£1,000
£25	£5

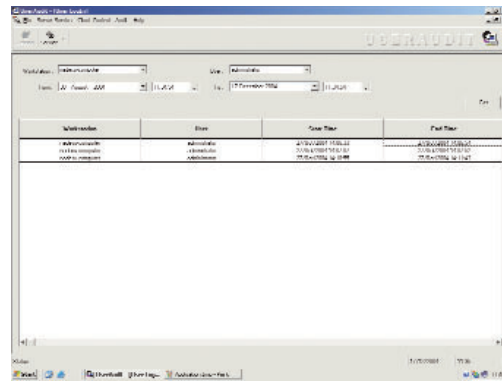
Per Server
Per User

All prices exclude VAT

Annual Renewal	
Corporate	Education
£2,500	£750
£25	£5

Per Server
Per User

All prices exclude VAT



User Audit Login

Application execution control

UserAudit can prevent unauthorised applications from being executed on a workstation. This allows administrators to prevent users from running time wasting or bandwidth hungry applications such as automatic download tools or peer to peer applications.

Tracking down system abuse

By knowing who is on the network at any given time, administrators can narrow down the causes of disruptive or abusive activity. As system abuse is traced and dealt with, those who may be considering abuse in the future will be deterred.

Application license planning

Each organisation will have a certain number of licences for the applications that they run. UserAudit will allow administrators to monitor the applications being run and assist in pinpointing where additional licenses are needed and where the license level has yet to be reached.

Workstation crash report

UserAudit tracks system crashes, so workstations can be monitored for reliability. Even though the user may restart their workstation immediately, UserAudit will still detect and log the times and locations of unwanted crashes and produce a report to assist with network maintenance.

Comprehensive reporting

The reporting from UserAudit is comprehensive, to provide a thorough insight into User activity on your network. You can choose which parameters to summarise, from the following:

- Time period - set the time, from and to.
- Time measurement - minutes, hours or days
- User - login name (regardless of location)
- Location - workstation name (room and building)
- Department - Accounts, Marketing, Course or faculty.
- Application - by licence held

Corrective action

An email will alert the administrator of unauthorised access or other violations enabling preventive action to be taken. Along with continuous monitoring detecting unauthorised access to applications, the system can terminate an application to prevent such unauthorised activity. Workstations can be locked from a remote location to prevent access and stop a user from abusing the system.

Approved Internet InterGenie

Managed Internet Access for Schools Safe surfing and quality Internet resources for Schools

Selective browsing for education

With the freedom to surf and the selectiveness to exclude inappropriate material Akhter InterGenie gives schools a fast, simple and safe way of reaching the very best sites on the Internet. Teachers and parents are assured of peace of mind as students can access a vast on-line 'library' of approved and monitored information. Accessing the most relevant subject sites is achieved by choosing from a category list. Just point and click on the site required without the need for entering complicated web addresses.

What makes InterGenie different?

There are several methods in place to keep users protected from accessing inappropriate material on the Internet. Most common are the "Nanny" programs that search sites live on the Internet and then restrict access to those that are deemed to be inappropriate because they contain certain text or images. However, there is always the possibility that a site may slip the net. At Akhter, we have taken a different approach, building a contained and secure network of websites that have been pre-approved by teachers.

Flexible to accommodate ability ranges

When a site is chosen for InterGenie, it is put into a simple to recognise category. Users are presented with a choice of graphical buttons to suit different age groups and abilities, along with a multimedia browser providing a clear spoken description and written details of the navigation buttons and browser features.

Your choice

Any teacher may recommend a site to be added to InterGenie from within the browser. Akhter maintains a record of which sites are added and by whom they are recommended. If there are links to other sites, these will be included too, but only if they have been recommended as appropriate.

Schools across Britain are already enjoying the benefits of InterGenie software.

No disappointments - instant access

Because the sites on InterGenie have already been downloaded and are stored on local servers, access to them is very fast, not slowed by the heavy burden of Internet traffic and at the mercy.

Security

Akhter InterGenie is fully secure and neither the system, nor the websites held on it can be adjusted or destroyed. This ensures peace of mind for teachers and parents, as the system controls access to the full Internet.

The "Traffic Light" monitoring system

There will be some instances when full open access to the Internet may be desired.

A coloured button appears in the top right hand corner of your students' screens to indicate the status of the page being viewed, allowing simple monitoring. Pages classified as red light are blacklisted sites that cannot be viewed, those with a green light are from the approved white list and pages with a yellow light are marked alert the administrator when viewed and access to these are monitored.

Search facility

Search for a particular subject or word using the simple to use Akhter InterGenie search option. Just type key word to produce a list of all of the relevant sites.

InterGenie features

- Specialised web browser compatible with Microsoft Internet Explorer
- Graphical interface for ease of use
- Hot-desk environment
- Password-protected option screen
- Safe environment allowing users to browse unsupervised
- Categorised site listing
- Quick site list feature
- Mediated access available - visited sites are reported to the administrator
- Unfiltered access for specified staff
- Administrators can add "approved" sites from within the browser
- Fully integrated access to email and news groups
- Simple interactive tutorials
- Search facility
- Location of sites by subject or topic
- Point and click on the site required

Initial Licence	
Corporate	Education
Per Server £750	£750

All prices exclude VAT

Annual Renewal	
Corporate	Education
Per Server £12.50	£2.50

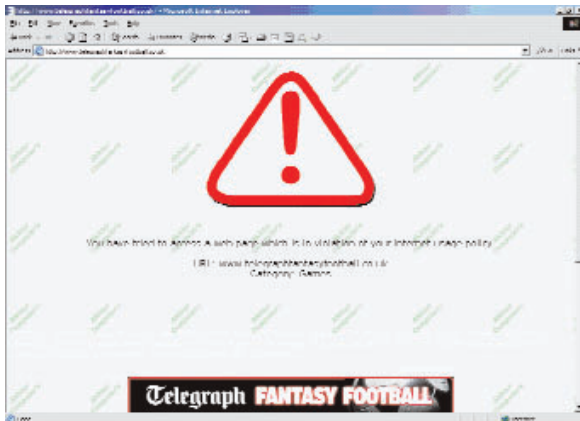
All prices exclude VAT

Managed Internet Access

GenieGuard

Managed Internet access for corporate clients

Akhter GenieGuard Surf Monitor offers businesses an audit process for their employees on the Internet. Using a secure checking process, access can be monitored and sites can be prohibited to individuals or all users as defined by your Company's requirements.



What is GenieGuard?

GenieGuard is a server that sits between your company's network and the World Wide Web. It provides faster access to commonly used sites, but it also provides a monitoring system for use on the web.

Although the Internet is becoming a prerequisite for the working practice of many businesses, it is easy to see how it can be subject to mistreatment and exploitation by some employees. Whilst you want to limit and prevent abuse from the few who misuse the system, you may not wish to penalise all employees. GenieGuard works on a self-learning process, allowing you to invoke prohibitions to certain sites and/or users as you learn from experience.

How does GenieGuard work?

A Company would start by allowing their staff open access to the Internet and initially giving them the benefit of the doubt. In the meantime, GenieGuard builds a profile of each user, noting which sites are visited and how often. After a trial period, or when enough data has been gathered, the administrator can view the user profiles and amend access rights where the company deems necessary.

Ease of management

All sites that are saved with an 'Allow' or 'Prohibit all Users' classification will not appear on future user profile lists, unless the option is selected to allow this. This helps to keep the profile list easily manageable. If selected, the 'Allow' sites will still show the number of visits made per user.

Versatility and control

For the first time, Companies have the choice to prohibit sites and users in a subjective way, based on their Company Policy and levels of stringency as well as the performance of the individual. The system can be used to act as a deterrent to keep misuse to a minimum, or to bar only those users who frequently exploit the Company's use of the Internet.

Faster access

GenieGuard is not just for blocking unwanted websites from the company's screens. As a proxy server, the GenieGuard will build up a memory of the most frequently used and permitted sites, so they can be seamlessly accessed even quicker.

GenieGuard monitoring options

GenieGuard can actively monitor the use of particular websites to detect excessive non work related interest viewing indicating a distraction from workload. Where users are spending excessive time viewing sport or other recreational material the company can prevent the user accessing such sites.

Allowed - most productive sites

All sites will initially be registered as allowable. As the administrator views the sites and visiting times, they can be monitored or prohibited as appropriate. Work related sites always remain assessable to all staff.

Monitor - non-work related sites

You may be prepared to tolerate the occasional visit to certain non-work related sites. Simply monitor the number of visits, and those with excessive visits can be prohibited without affecting access to those behaving reasonably.

Prohibit-pirate software or pornographic

Prohibit individual users, or apply a company-wide ban (prohibit all users) on sites that you definitely don't want staff to visit.

Professional Internet from Akhter

Category controls

GenieGuard operates site controls which are achieved through categorisation of websites according to material content. The classification covers 60 million sites and enables full access to other categories.

GenieGuard

Prohibited Access Categories

- Drug abuse
- Cult or Occult
- Hacking
- Illegal or Questionable
- Racism or Hate
- Violence
- Abortion
- Adult materials
- Alcohol or Tobacco
- Gambling
- Militancy or Extremist
- Nudity
- Pornography
- Tasteless
- Weapons
- Games
- Pay to surf
- Malicious
- Spyware
- Personals and Dating

Access to the following categories is prevented as by the default settings. This ensures that users get the full benefits out of the Internet without risk of exposure to unsuitable or distracting materials.

The Akhter ISP and Webmail facilities are designed for professional business and public sector users

Akhter ISP

The Internet from Akhter offers a wide choice of Internet access speeds. The system is ideal for the business user or public sector users. Inbuilt administration control options enable users to be restricted to access specifically approved sites or categories. See InterGenie and GenieGuard.

WebMail

WebMail is a fast and convenient email system that users can access anywhere over the Internet.

WebMail has been designed with the public sector and corporate user in mind. It is free of adverts associated with popular Internet mail providers and has the optional capability of being able to send short messages via SMS or direct to mobiles.

WebMail comes integrated with Akhter ISP, which has a choice of Internet access speeds up to 8Mbps.

Access control facilities

Akhter Internet is designed for operation with surf control facilities, which use white lists of pre-approved sites and are ideal for schools, cutting the need for constant supervision of Internet use.

Alternatively for control with wider access to Internet a category restriction can be set up that blocks access to non work related sites.

Details are in GenieGuard section.

Akhter membership

Akhter is a member of LINX at London's Docklands Telehousing Complex. Telehouse provides Akhter Internet Service Provision.

Akhter is a member of RIPE

Office and Remote Email

Akhter WebMail

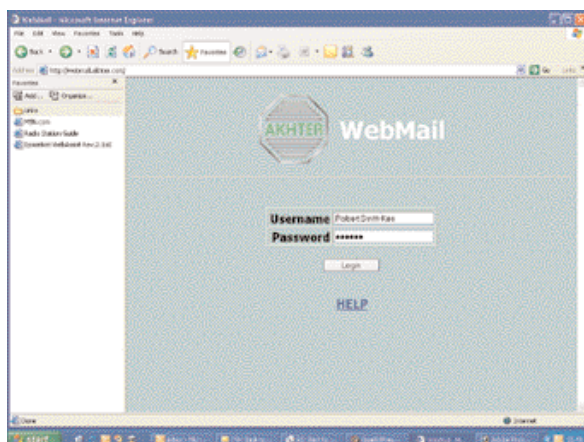
An easy to use email system with Internet Service Provision, Akhter WebMail is a fast convenient and full professional solution.

Advantages of Akhter WebMail

- Easy to use
- Create and manage personal folders
- Address book
- Signature option
- Send a file attachment up to 5Mb (depending on connection speed)
- Block unwanted email senders by name or domain
- Accept filter facility to pre-sort incoming emails into Inbox or Junk folder
- Access your account from any Internet connection around the world
- Virus protection from using the Akhter ISP provision

Why use WebMail?

Websites and email are becoming commonplace amongst many schools and businesses. With 190 billion email messages sent each year, email has become a commodity for those wanting fast, electronic contact and information. WebMail is Akhter's email account system allowing you to get connected to email, without the concern of choosing an appropriate, reliable server company with the worry of spiralling connection costs.



WebMail Inbox

Individual user accounts

With Akhter WebMail, users can have individual and school email accounts for use from school or home. With the advantage of large storage, attachment and operating choices, users are given the maximum variety for clearly sending and reading mail.

Summer holiday blues?

With some email domain systems, if an account is not used or opened during a set length of time (normally 30 days) the account is frozen and may even be terminated. Akhter recognises that email systems may be inactive during holiday periods, therefore such restrictions are eliminated to enable accounts through Akhter WebMail to be available at all times without the risk of losing an account.

Instant messenger

As an option of Akhter WebMail, users can have from complimentary use of SMS (Short Messaging Service). As a direct facility from the Akhter WebMail home page, you can send normal 160-character text messages directly to individual mobile telephones without charge. So, Akhter WebMail can help you keep in contact even if email is not the most convenient option.

Remote access for your accounts

Unlike a server domain that ties the user to an individual computer or phone line, Akhter WebMail is accessed straight through our website, meaning your unique Akhter WebMail account can be accessed from anywhere in the world through a simple Internet connection. Akhter also uses POP (Post Office Protocol) to allow users to retrieve electronic mail for up to 4 email accounts. Whether you have mail from your school address, your company, your ISP or your individual WebMail account - they can all be accessed through one convenient location with Akhter WebMail.

Low cost

Akhter WebMail is available as part of our Internet Service Provision or through local mail processing. As part of this package, Akhter have no initial set-up fees or on going charges for use of Akhter WebMail.

Professional ISP from Akhter Internet

Professional ISP designed to suit the Business, Education and Public sectors

Filtering content

Managing access to the world's largest unclassified library is a daunting prospect for organisations. Accessing undesirable sites and aimless browsing can be very costly in all sorts of ways. The "filtering" offered by most Internet Service Providers (ISP's) is inefficient and sometimes inoperable since Internet Protocol addresses cannot be filtered.

User customisation

Most Internet Service Providers do not offer any extension to their normal service to allow organisations to customise to their needs. As customisation usually involves expensive bespoke solutions, achieving a solution that can grow with the organisation requires a flexible structure that is easy to manage and change.

Internet in tune with the public sector

Consider what benefits you could gain from a service provider whose background was born from the needs of the public sector; a service that was tailored to specific needs, a service that considered the usage to which it was likely to be put. Such a tailored and secure service is available, the approach of Akhter Internet Service Provision is from the position of "enabling" and "empowering".

This approach means that only the sites which have been visited or permitted by an authorised administrator, can be used by the employees of the organisation.

Furthermore these sites are placed in a structured list making access logical and fast.

Akhter's methodology therefore resolves the problem of attempting to filter the hundreds

of unsuitable sites from new ones that appear every day.

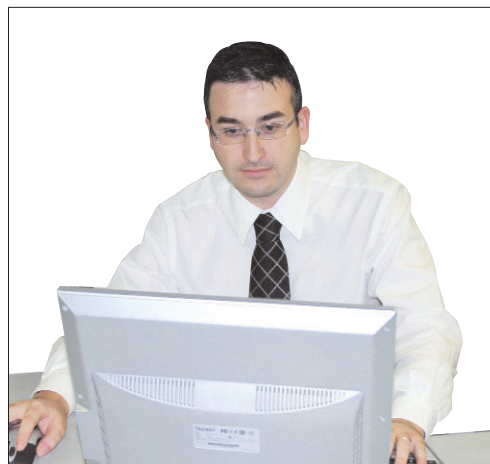
Professional pace of operation

As you might expect this service is not available to the general public, and with this comes less obvious benefits. For example its provision does not suffer with the slow response times that are associated with general public Internet access. Performance benefits can be further enhanced with proxy server technology placement in the establishment/offices. User access to selected sites that have been transparently updated - "on the fly" is therefore rapid, saving valuable work time. These are just some of the factors Akhter considers to allow you to control and manage your Internet usage.

Akhter enabled ISP

Principal Elements

- The Akhter Enabled Provision
- Akhter InterGenie Facilities Managed Content Options
- Webmail Provision



Akhter ISP Services

ISP Stream Home 512k Installation	£150.00
Broadband Single User 512k Monthly	£15.31
Broadband Single User 512k Yearly	£183.72
Connection (Movement of Site)	£60.00
ISP 512k Installation	£260.00
ISP 512k VOIP Installation	£300.00
Broadband 512k Monthly	£25.52
Broadband 512k Yearly	£306.29
Connection (Movement of Site)	£60.00
ISP 1Mb Installation	£260.00
Broadband 1Mb Monthly	£55.31
Broadband 1Mb Yearly	£663.83
Connection (Movement of Site)	£60.00
ISP 2Mb Installation	£260.00
Broadband 2Mb Monthly	£85.11
Broadband 2Mb Yearly	£1,021.28
Connection (Movement of Site)	£60.00
ISP 4Mb Aggregated Installation	£700.00
ISP 4Mb Aggregated Service Yearly	£2,500.00
ISP 4Mb Aggregated Service Monthly	£208.83
ISP 8Mb Aggregated Installation	£700.00
ISP 4Mb Aggregated Service Yearly	£4,000.00
ISP 8Mb Aggregated Service Yearly	£333.33

Broadband choice from Akhter ADSL

Akhter ADSL broadband is a high speed Internet access that gives up to 36 times faster Internet connection and email facilities for PCs and Macs. Compared to using a dial up connection.

It transforms an ordinary copper telephone line into a high-speed, continuous digital connection that is un-metered, with no variable charges for a one-off installation fee and monthly/yearly subscription.

What are the benefits?

- Download speeds up to 2Mb - to surf up to 36 times faster than a 56k modem
- Upload speeds up to 512k - send large files easier and faster
- Unlimited email addresses - to manage department email more easily
- Option for email to be held on the Akhter servers or forwarded to your web space if you choose
- Up to 100Mb of web space - to host your own site
- 4 external live IP addresses
- No need to firewall your internal network, Akhter will
- Multiple sites can be linked to create a virtual private network
- Various filter levels available

	ADSL USB 500	ADSL 1000	ADSL 2000	ADSL 4000	ADSL 8000
Download	512k	1Mb	2Mb	4Mb	8Mb
Upload	256k	256k	256k	1Mb	1Mb
Web Space	30Mb	50Mb	100Mb	100Mb	100Mb
Permanent Un-metered					
Internet Access	•	•	•	•	•
WebMail/POP3	•	•	•	•	•
Mail Store & Forward	•	•	•	•	•
Unlimited email addresses	•	•	•	•	•

*Note upload and download times vary according to other localised factors.

How is ADSL different?

With Akhter Broadband, users have instant benefits that are easy to see. Working alongside your existing phone cable, it offers Internet access without disrupting incoming or outgoing calls. With an automatic connection available 24 hours a day, the Internet can be accessed and utilised at anytime with speeds up to 32 times faster than a 64k ISDN line and 36 times faster than the 56k modem currently installed in modern multimedia PCs.

How does ADSL work?

ADSL converts the existing twisted-pair telephone line into access paths. The effect is to provide a second line, purely for data and at a speed much faster than would be achievable via a standard modem or ISDN line. ADSL doesn't use all of the capacity of the line, so when regular telephone calls need to be made, or faxes need to be sent, it can be done simultaneously. This is because ADSL technology maintains the line's capacity to handle speech at the same time.

ADSL 500/USB

For smaller, private networks that don't require routers for grouping networks on-line, the ADSL 500 / USB provides a modem that plugs directly into the PC instead of through a router. This option utilises Network Address Translation (NAT) so that network addresses are configured from the modem rather than single-users. USB supplies a fast ADSL Broadband for smaller capacities that don't require large networking.

Check your line

In order to confirm whether your local exchange can support ADSL Broadband, simply call or email Akhter with your telephone number. If you are unable to take advantage of ADSL, we can offer alternatives such as ISDN or fixed line solutions.

Simple installation

The procedure for converting a standard copper telephone line to ADSL can be carried out quickly by an engineer on your premises. You will receive an ADSL modem or router, depending on the service chosen, plus software that will be linked to your telephone line in order for the connection to be made.

Fixed cost

Eliminating all other charges, all you pay is the initial installation fee and then a fixed monthly amount for the ADSL line. With no other connection or on-going charges, your stay on-line is limitless.



Akhter Computers Limited, Akhter House, Perry Road, Harlow, Essex CM18 7PN
Tel: 01279 821200 Fax: 01279 821300 Email: sales@akhter.co.uk Web: www.akhter.co.uk

E&OE Jan 05